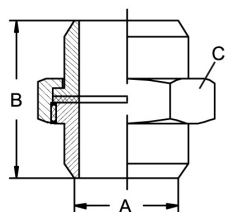
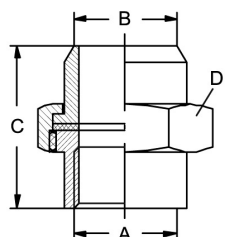
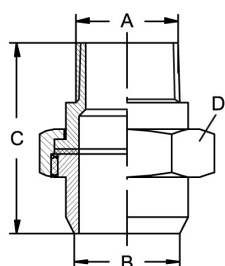


**Threaded fittings DIN EN 10241**
**Art.No**
**EUR**
**Art.No**
**EUR**
**Union with washer, SS**


DN	A	B	C					AISI316C-PTFE
6	10,2	37	SW 30					542828 <b>33,90</b>
8	13,2	37	SW 30					542829 <b>29,20</b>
10	17,2	40	SW 36					542830 <b>30,60</b>
15	21,3	46	SW 41					542831 <b>34,80</b>
20	26,9	48	SW 46					542832 <b>44,60</b>
25	33,7	52	SW 50					542833 <b>60,50</b>
32	42,4	60	SW 65					542834 <b>83,70</b>
40	48,3	71	SW 75					542835 <b>101,20</b>
50	60,3	76	SW 90					542836 <b>135,40</b>
65	76,1	90	SW 110					542837 <b>355,80</b>
80	88,9	90	SW 120					542838 <b>474,70</b>
100	114,3	115	SW 155					542839 <b>820,60</b>

**Union with washer, RpS**


DN	A	B	C	D				AISI316C-PTFE
8	Rp 1/4"	13,2	37	SW 30				542929 <b>58,70</b>
10	Rp 3/8"	17,2	40	SW 36				542930 <b>58,70</b>
15	Rp 1/2"	21,3	46	SW 41				542931 <b>66,90</b>
20	Rp 3/4"	26,9	48	SW 46				542932 <b>88,30</b>
25	Rp 1"	33,7	52	SW 50				542933 <b>116,10</b>
32	Rp 1,25"	42,4	60	SW 65				542934 <b>166,20</b>
40	Rp 1,5"	48,3	71	SW 75				542935 <b>203,50</b>
50	Rp 2"	60,3	76	SW 90				542936 <b>270,60</b>
65	Rp 2,5"	76,1	90	SW 110				542937 <b>713,90</b>
80	Rp 3"	88,9	90	SW 120				542938 <b>920,10</b>

**Union with washer, RS**


DN	A	B	C	D				AISI316C-PTFE
8	R 1/4"	13,2	50	SW 30				543029 <b>67,10</b>
10	R 3/8"	17,2	52	SW 36				543030 <b>67,10</b>
15	R 1/2"	21,3	62	SW 41				543031 <b>74,70</b>
20	R 3/4"	26,9	65	SW 46				543032 <b>97,80</b>
25	R 1"	33,7	73	SW 50				543033 <b>126,90</b>
32	R 1,25"	42,4	83	SW 65				543034 <b>175,80</b>
40	R 1,5"	48,3	90	SW 75				543035 <b>226,60</b>
50	R 2"	60,3	102	SW 90				543036 <b>306,50</b>
65	R 2,5"	76,1	121	SW 110				543037 <b>732,80</b>
80	R 3"	88,9	134	SW 120				543038 <b>952,70</b>